

# CONTENT

1. Description .....	3
2. Features .....	3
3. Application .....	3
4. Picture .....	4
5. Operation Menu .....	5
6. Specification .....	6
7. Package .....	7
8. FAQ .....	8

## 1. DESCRIPTION

CGA,EGA,RGB TO VGA GAME

The high definition converter GBS8200 is a professional game & playstation display converter. Supported all games (Amusement,Play station, Xbox...) convert to CRT monitor, LCD monitor, PDP monitor... Auto scan CGA/EGA/YUV signal, VGA outputs output high resolution signal.

## 2. FEATURES

A: Supports CGA/EGA/YUV signal input

B: Supports VGA output 640\*480, 800\*600,1024\*768,1360\*768

C: CGA/EGA signal auto scan (15K,24K,31K)

D: YUV signal auto scan (480I, 576I,720I, 1080I, 480p, 576p, 720p, 1080p)

E: Chinese and English OSD)

F: Supports position control & zoom control.

G: True digital 24-bit A/D converter for true 16.7-million color conversion

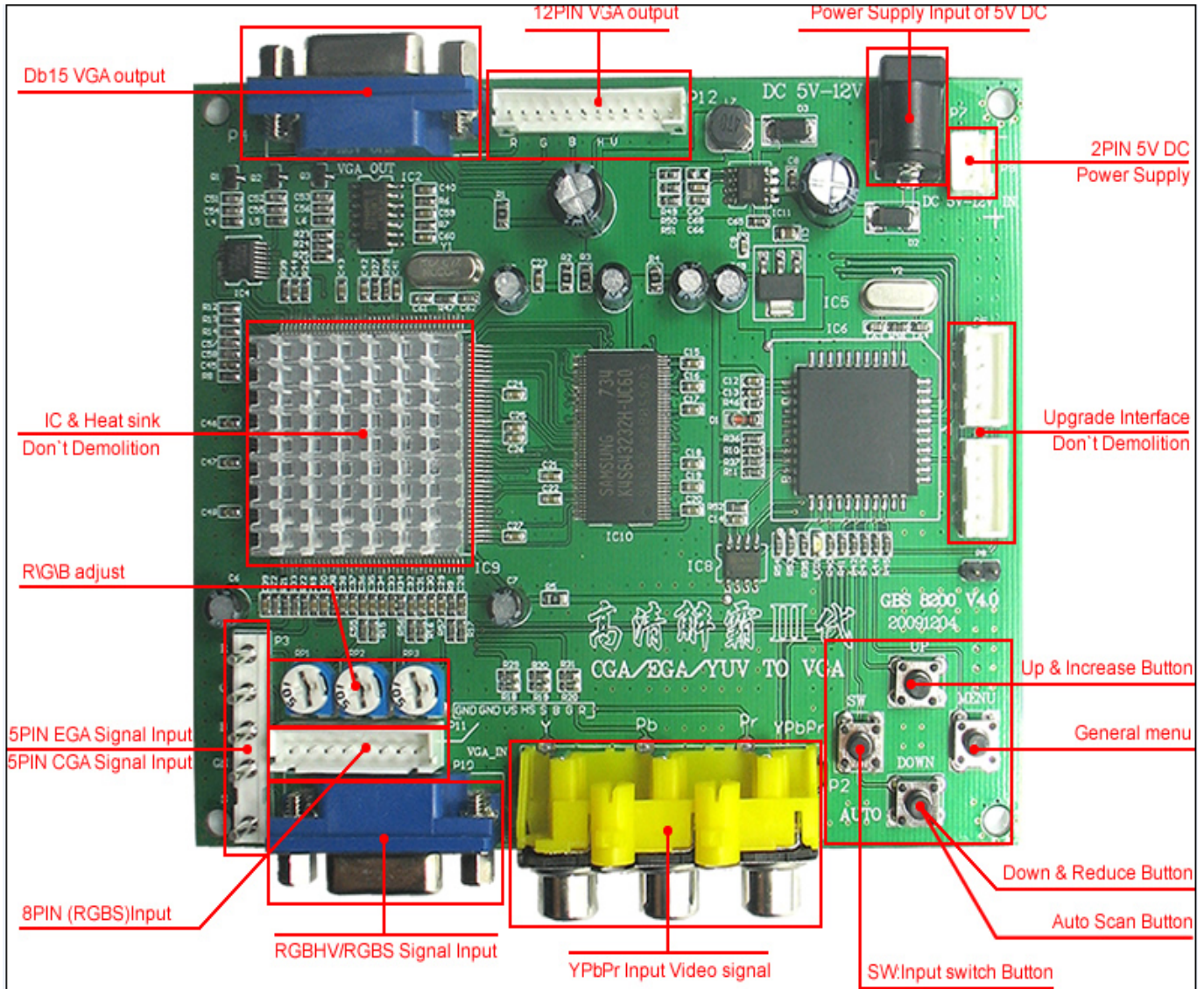
H: Supports all VGA monitor (CRT/LCD/PDP/PROJECT)

## 3. APPLICATION

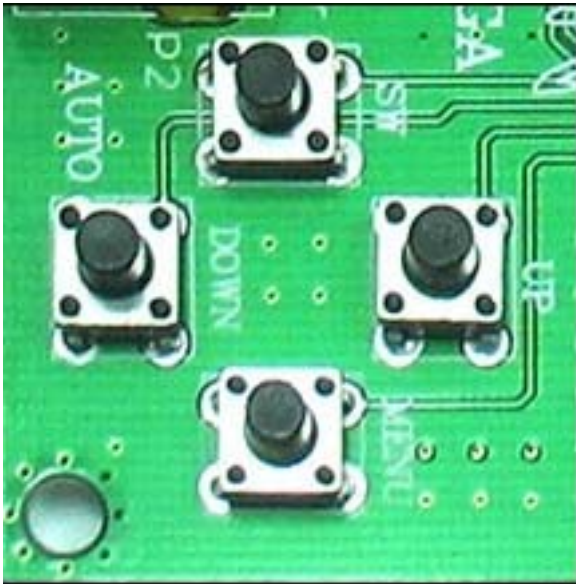
Transfer high resolution low resolution, scan board, display, high resolution screen, LCD games, arcade LCD, HD game consoles, high resolution scanning, connectivity fighting, KOF board, LCD Landlords, turn Super 888, 15K,31K, CGA/EGA/YUV switch to VGA,CGA/EGA,CGA,EGA,15K,31K, RGBS switch to VGA, 24K switch to 31K,CGA switch to VGA,EGA switch to VGA,32inch LCD fighting machine, LCD fighting ring, the ultimate LCD fighting, game-specific liquid crystal display, 32inch LCD iron first Wong, LCD around the world, dream of fighting, 32inch high definition LCD screen games, Tekken LCD machine.

---

## 5. PICTURE



## 6. OPERATION MENU



A: "MENU" open OSD menu, and enter

B: "UP" up and increase

C: "DOWN/AUTO" down and reduce

Press this key auto scan CGA/EGA signal

Press this key over 5 second and release reset system

Note: This operation is invalid when you open OSD menu

D: "SW" switch input signal Ypbpr/RGBS/RGBHV

Note: This operation is invalid when you open OSD menu

"Clamp sp"& "Clamp" please donot adjust this button, excepting the monitor have black or discoloration.

E: More functions control please look to OSD to operation.

---

## 7. SPECIFICATIONS

### A: POWER

DC5V 2A +/-0.5V

### B: CGA/EGA

14.5V-16.5K

23.5V-25.5K

30.5V-32.5K

AUTO SCAN

### C: RGBHV

30.5V-32.5K

AUTO SCAN

### D: VGA

30.5V-32.5K

AUTO SCAN

### E: YPBPR

480I, 576I, 720I, 1080I

AUTO SCAN

### F: INPUT SIGNAL

YCBCR

480I, 576I, 720I, 1080I

AUTO SCAN

### G: OUTPUT SIGNAL

VGA

640\*480,800\*600,1024\*768,1360\*768

---

## H. USER CONTROL

Input Switch, Image Zoom, Image Position

Output Resolution, R/G/B gain adjust.

Menu Key

R/G/B VR

I. DIMENSIONS: 115\*105\*20mm

## PACKING:

Item	QTY	Remarks
Game Display Converter	1	
2pin Power cable	1	DC5V/1A
8pin flat cable	1	
user's manual	1	English

---

## 8. FAQ

A: No signal on you monitor

please check input and output cable, make sure all cable it's connected. And make sure power it's on. Display on you monitor it's "No signal" please press "SW" to switch input signal.

B: Input not supports

when you monitor display "input not supports" maybe you need change to low resolution.

Please press "DOWN/AUTO" over 5 second and release. System reset to 800\*600 output.

C: Image not full on you screen

please enter menu adjust image position and zoom.

D: Image shake or freeze

please press "DOWN/AUTO", system auto scan input signal and restore image.

E: Have black item on screen, or all screen it's too black.

please adjust "Clamp sp" and "Clamp st", please keep "Clamp st" less than "Clamp sp".

F: Image color not right

please adjust R\G\B VR.

---